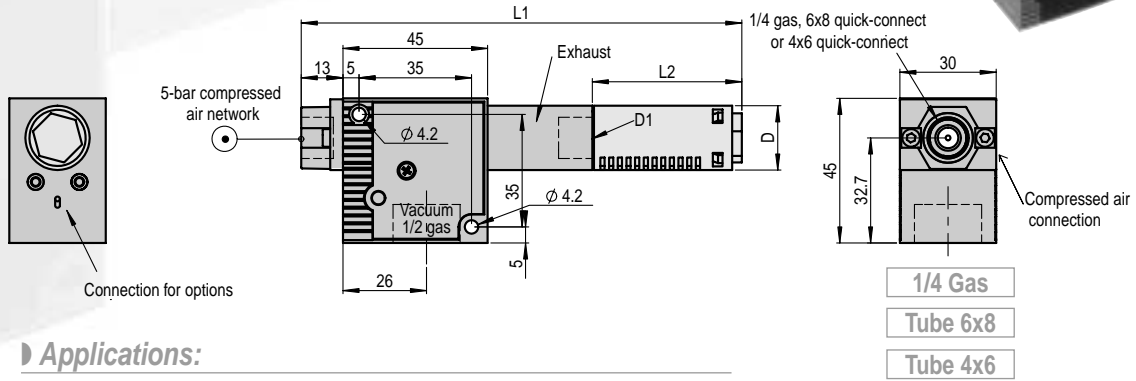
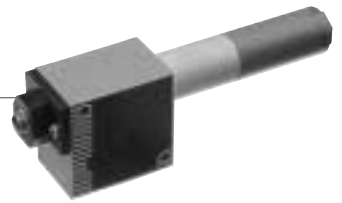


Simple venturis, series GVP



- 1/4 Gas
- Tube 6x8
- Tube 4x6

Applications:

Vacuum generators in series GVP are the **basic venturis** in the modular range.

Recommended for applications **without control**, they are available at 5 different power levels (evacuation time) and 3 different vacuum levels: version **X** with **50%** vacuum for **very porous** products, version **T** with **75%** for porous products and version **N** with **90%** vacuum for **sealed products**. The suction flow rate increases as the maximum vacuum level decreases, with the same nozzle diameter.

As well as being used with suction cups, they can be used for the purposes of liquid metering, spraying and tank depressurization, etc.

Characteristics:

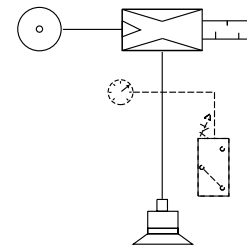
Characteristics	Nozzle ø	Air consumption	Max. vacuum as %			Drawn-in air Nl/min			D mm		D1 Gas		L1* mm		L2 mm		
			X	T	N	X	T	N	X	N/T	X	N/T	X	N/T	S	K(N/T)	K(X)
Models	mm	Nl/mn	X	T	N	X	T	N	X	N/T	X	N/T	X	N/T	S	K(N/T)	K(X)
GVP 12	1.2	67	40	75	90	150	63	45	30	20	1/2	1/4	160	127	45	68	121
GVP 15	1.5	100	50	75	90	180	95	70	30	20	1/2	1/4	160	137	45	68	121
GVP 20	2	180	50	75	90	250	160	125	30	30	1/2	1/2	198	137	60	121	121
GVP 25	2.5	270	50	75	90	360	240	200	30	30	1/2	1/2	198	137	60	121	121
GVP 30	3	400	50	75	90	450	330	265	30	30	1/2	1/2	270	270	-	121	121

On standard basis, versions N and T are supplied with silencer S and version X is supplied with silencer K, except for model GVP 30 which is always equipped with silencer K.

(*) L1 equipped with standard silencer

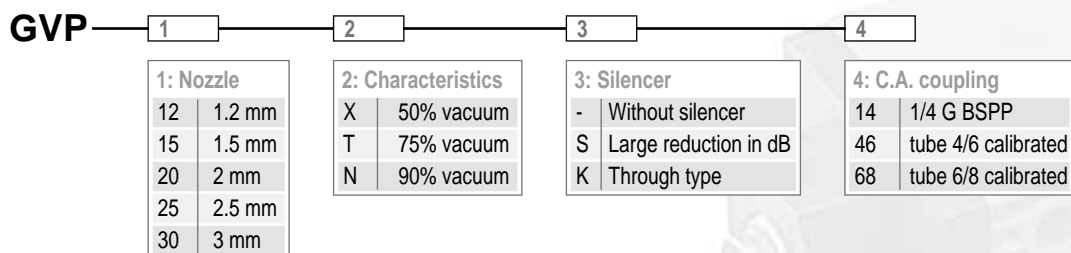
Specifications:

Compressed air	Filtered, non-lubricated, 2 to 6 bars
Temperature	-10 to 80°C
Optimal pressure	5 bars
Body material	DELTRIN



Options:

See pages 28 to 31.



Note: Versions N and T: silencer S and K • Version X: silencer K
Curves and characteristics on pages 33 and 34.

Selecting a venturi

Evacuation time in seconds for 1 litre:

% VACUUM	10	20	30	40	50	60	70	80	85
GV 05 N	1.07	2.30	3.73	5.45	7.55	10.48	14.74	24.31	-
VR 05	0.92	1.96	3.18	4.63	6.38	8.79	12.17	18.96	27.39
GVA 07	0.54	1.15	1.88	2.76	3.86	5.44	7.87	15.40	24.29
VR 07	0.46	0.98	1.58	2.28	3.13	4.27	5.80	8.55	11.01
GVA 09	0.36	0.77	1.25	1.84	2.57	3.62	5.24	10.27	16.19
VR 09	0.31	0.65	1.05	1.52	2.09	2.85	3.87	5.70	7.34
GV 10 N	0.24	0.51	0.82	1.18	1.62	2.21	3.01	4.43	5.71
GVP 12 N	0.14	0.30	0.49	0.71	0.97	1.33	1.81	2.66	3.42
GV 15 N	0.10	0.22	0.35	0.51	0.70	0.95	1.29	1.90	2.45
GVP 15 N	0.09	0.20	0.32	0.46	0.63	0.85	1.16	1.71	2.20
GV 20 N	0.05	0.11	0.18	0.26	0.35	0.48	0.65	0.96	1.23
GVP 20 N	0.06	0.12	0.19	0.28	0.38	0.52	0.71	1.04	2.13
GVP 25 N	0.03	0.07	0.11	0.16	0.22	0.30	0.41	0.60	0.77
GVP 30 N	0.02	0.05	0.08	0.12	0.17	0.23	0.31	0.45	0.58
% VACUUM	10	20	30	40	50	60	70	-	-
GVP 12 T	0.10	0.22	0.37	0.55	0.78	1.16	1.92	-	-
GVP 15 T	0.07	0.15	0.24	0.36	0.52	0.77	1.27	-	-
GVP 20 T	0.04	0.09	0.14	0.22	0.31	0.46	0.76	-	-
GVP 25 T	0.03	0.06	0.10	0.14	0.21	0.30	0.50	-	-
GVP 30 T	0.02	0.04	0.07	0.10	0.15	0.22	0.37	-	-
% VACUUM	10	20	30	35	40	45	-	-	-
GV 05 X	0.74	1.66	2.89	3.69	4.71	6.12	-	-	-
GV 10 X	0.19	0.42	0.72	0.92	1.18	1.53	-	-	-
GVP 12 X	0.05	0.11	0.22	0.33	0.62	0.62	-	-	-
GV 15 X	0.07	0.16	0.27	0.35	0.45	0.58	-	-	-
GVP 15 X	0.04	0.09	0.15	0.20	0.27	0.39	-	-	-
GV 20 X	0.04	0.09	0.16	0.20	0.26	0.33	-	-	-
GVP 20 X	0.03	0.06	0.11	0.15	0.19	0.28	-	-	-
GVP 25 X	0.02	0.04	0.08	0.10	0.14	0.19	-	-	-
GVP 30 X	0.01	0.03	0.06	0.08	0.11	0.15	-	-	-

Weight of venturis in grams:

MODELS	12	15	20	25	30	-	-	-	-
GVP	100	110	160	180	265	-	-	-	-
GVPS	180	190	240	260	345	-	-	-	-
GVPD	270	280	330	340	425	-	-	-	-
GVC	170	180	-	-	-	-	-	-	-
GVCS	250	260	-	-	-	-	-	-	-
GVS	465	475	525	545	630	-	-	-	-
OPTIONS									
GVO PSE100 E	Electrical output vacuum switch	150 g							
GVO PSE100 EC	Electrical output vacuum switch with connector	45 g							
GVO PSL100 PNP	Electronic vacuum switch	25 g							
GVO PSA100 PNP	Display type electronic vacuum switch	38 g							
GVO VAF11140	Vacuum gauge VAF11140	100 g							
CONTROLLERS									
Pneumatic controller	8 g								
Electric controller	40 g								

Dimensions and characteristics may be modified without notice.